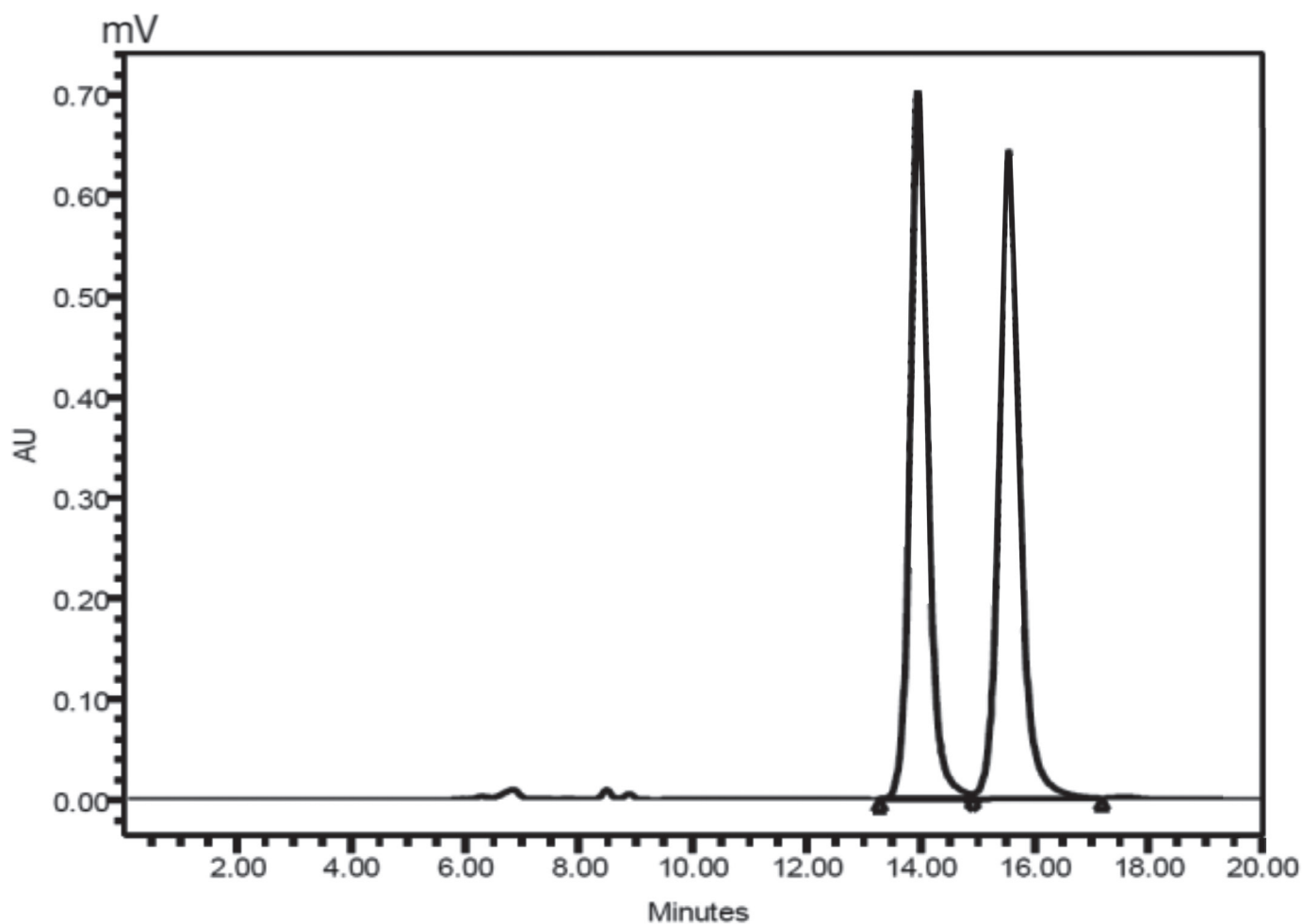


# Application Note



Fmoc-Gln (Trt)-OH\*\*



Column: CHIRAL ART Cellulose-SB 5  $\mu\text{m}$  (250 x 4.6 mm ID)  
Part No.: KSB99S05-2546WT  
Eluent: 100 mM potassium hexafluoro phosphate in water (adjust pH 2.0 by  $\text{H}_3\text{PO}_4$ )/acetonitrile (30/70)  
Flow rate: 0.5 mL/min  
Temperature: 30°C  
Detection: UV at 220 nm  
Injection: 10  $\mu\text{L}$  (in methanol)

\*\*Application data by courtesy YMC India Pvt. Ltd.